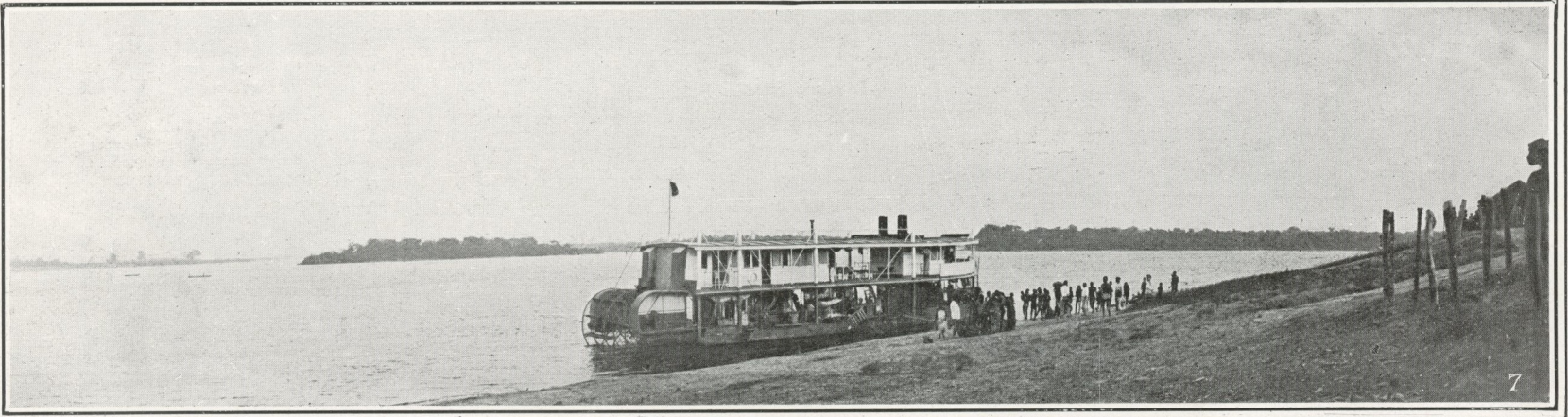
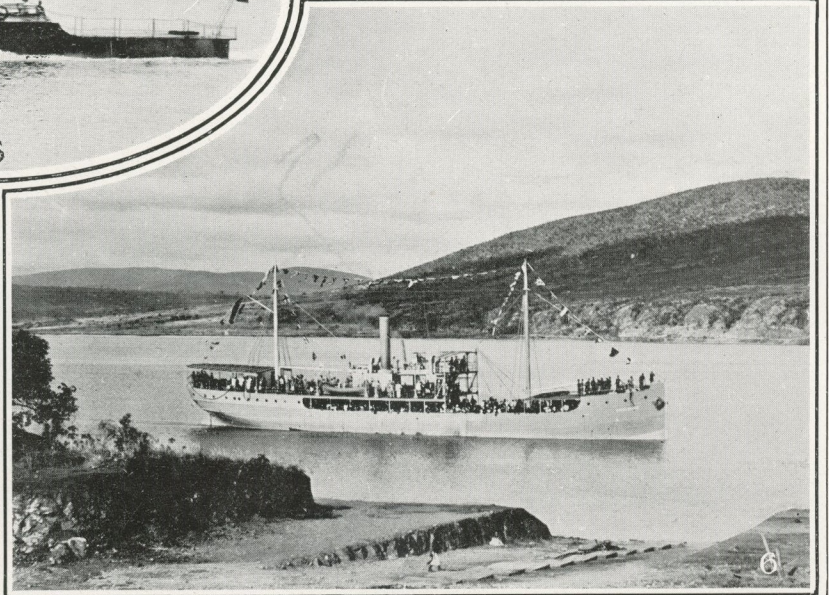
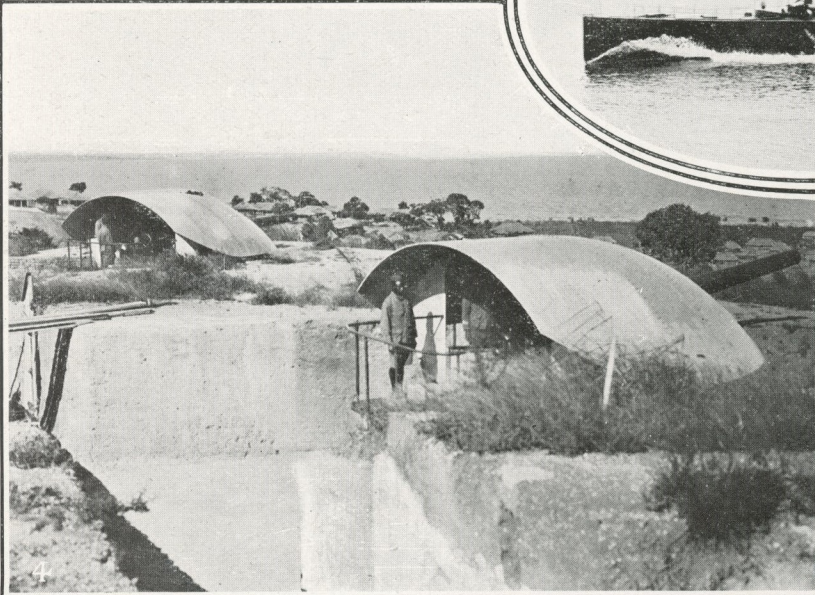
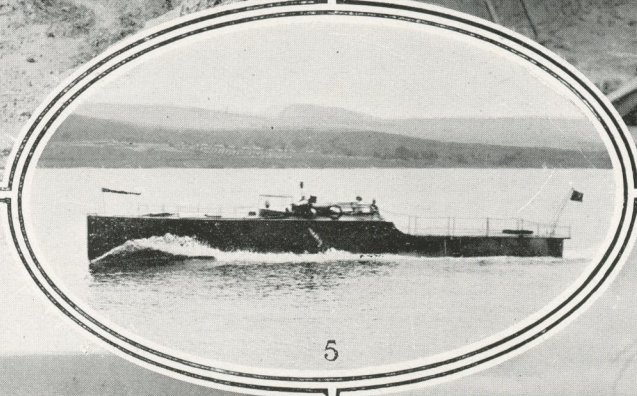
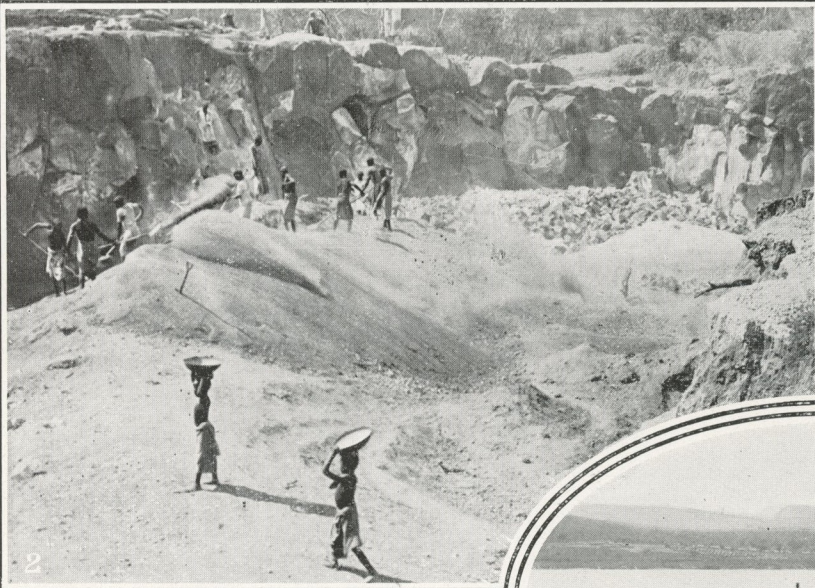
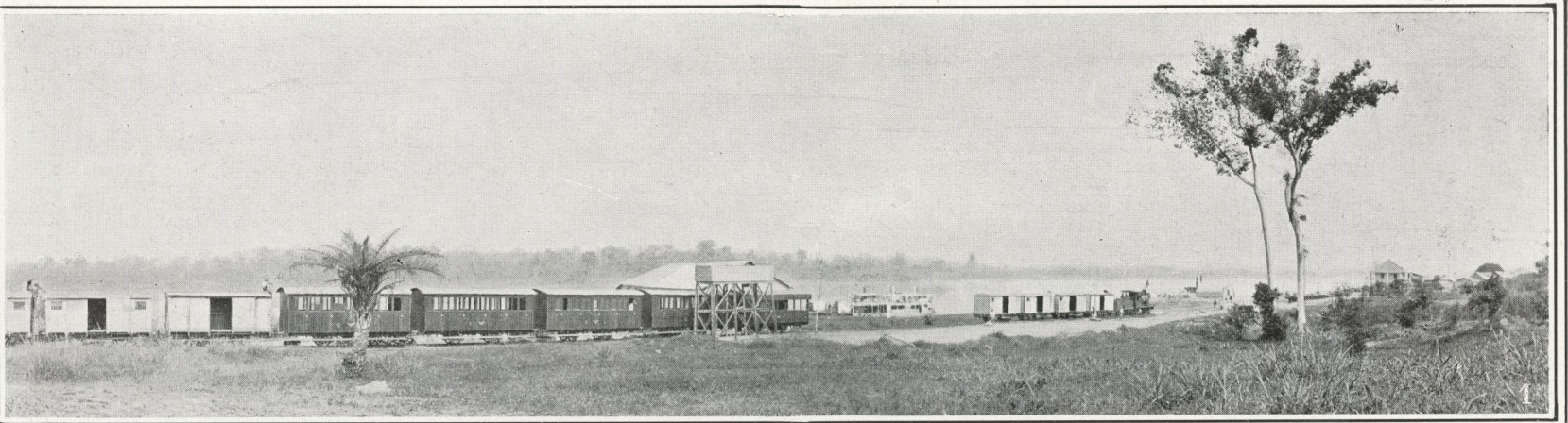


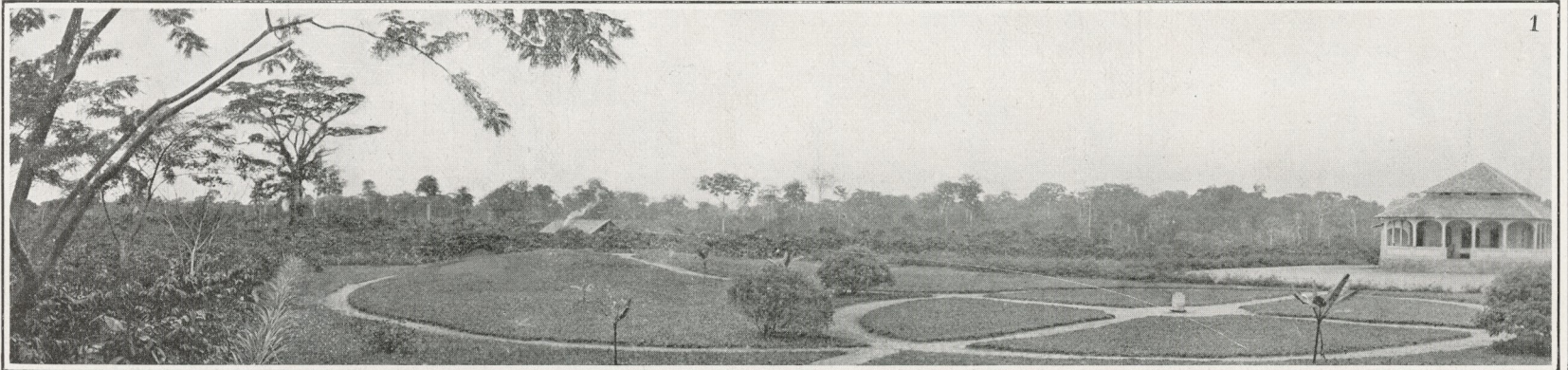
L'Effort Colonial — The Colony's Labour



Tandis que nos troupes coopéraient brillamment à la conquête de l'Est-Africain allemand, l'effort colonial ne s'est pas ralenti un instant : nos photographies l'établiront surabondamment. 1. Le chemin de fer des Grands Lacs africains à la station de Ponthierville. 2. Le travail dans les mines d'or de Kilo (Ituri). 3. Construction d'une voie ferrée. 4. La défense d'Albertville : canons de 160. 5. Un patrouilleur sur le lac Tanganika : le glisseur-torpilleur Netta. 6. Le "Baron Dhanis", construit en Afrique pendant la guerre, est destiné aux transports sur le Tanganika. 7. Le "Ville de Bruxelles" à Isangi.

During the whole time our troops were taking a brilliant part in the conquest of German East Africa, has the progress of the Colony been uninterrupted: our photographs are there to prove it most apparently. 1. The railway running from the Great African Lakes to the station of Ponthierville. 2. Work in the goldmines of Kilo (Ituri). 3. Building a railway line. 4. The defence of Albertville. 5. A patrol boat on Lake Tanganika: the slider-torpedo-boat Netta. 6. The S/S "Baron Dhanis" built in Africa during the war, to be used as a transport on Lake Tanganika, 7. The S/S "Ville de Bruxelles" at Isangi (mouth of Lomani).

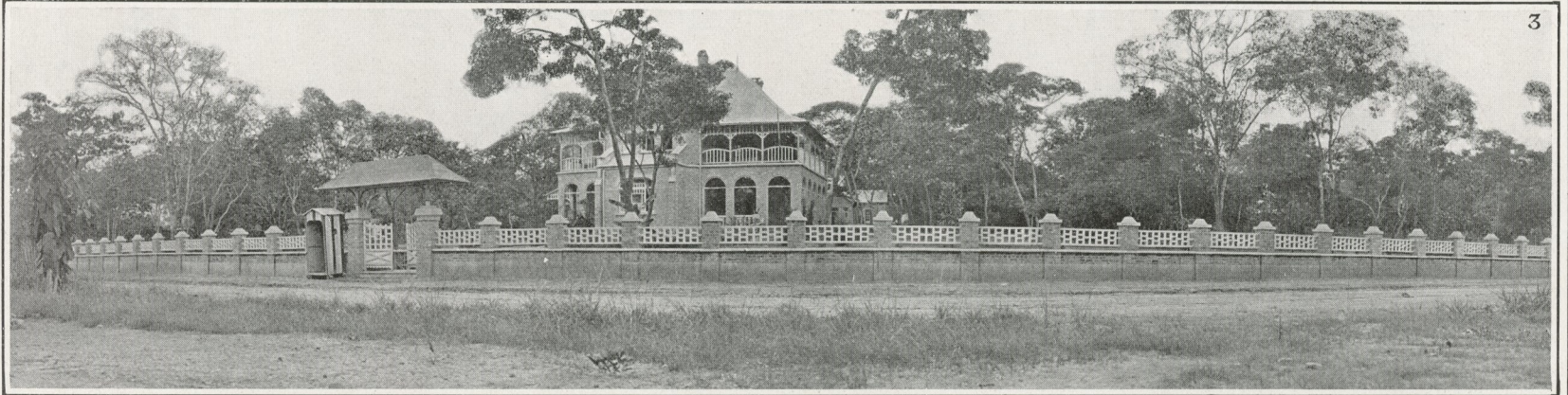
L'Effort Colonial — The Colony's Labour



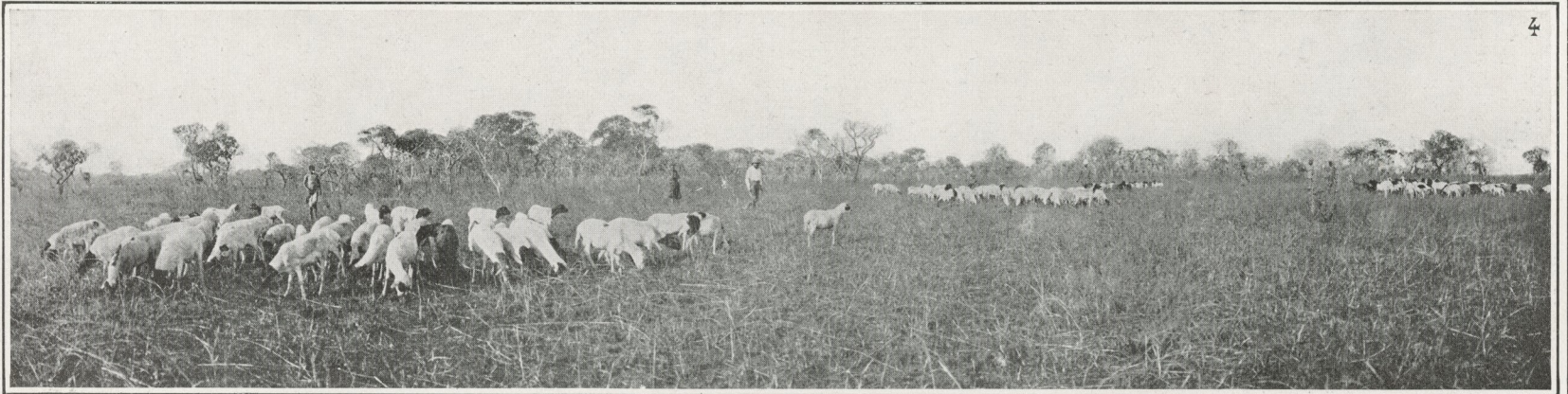
1



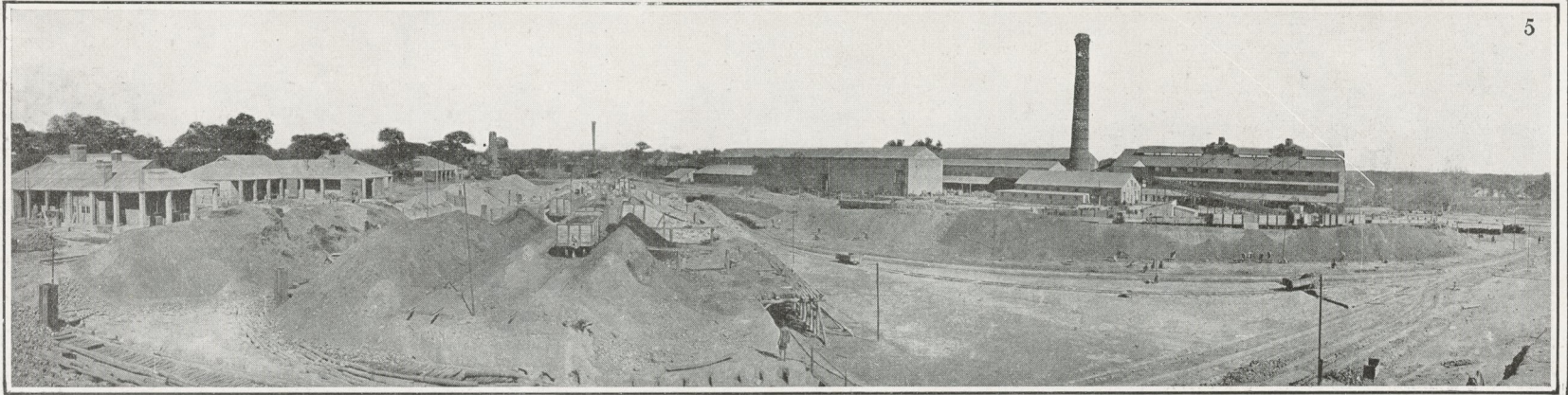
2



3



4



5

Malgré la guerre, le Congo a continué à vivre de sa vie normale et la réorganisation entreprise avant les hostilités s'est poursuivie sans relâche. 1. La station de l'Etat à Lula : jardins et caféiers. 2. Village et habitation d'un chef indigène aux Bangalas. 3. A Elisabethville : le boulevard Elisabeth et la maison des inspecteurs d'Etat. 4. Troupeaux de moutons, importés par milliers depuis 1914, à la station agricole de Katentania (Katanga). 5. L'expansion industrielle et économique du Congo : ces installations d'une société belge établie à Elisabethville (Katanga) donnent une idée de l'œuvre accomplie.

Notwithstanding the war, the Congo has been living its normal life and the work of reorganisation begun before the hostilities has been uninterrupted. 1. The State Station at Lula : gardens and coffee shrubs in the shade. 2. Village and the dwelling of a native chief at Lisala (Bangalas). 3. At Elisabethville : boulevard Elisabeth and the house of the State Inspectors. 4. Sheep flocks in the Katentania. 5. Industries and economic development in the Congo : these premises belong to a Belgian Company at Elisabethville (Katanga) and give a rough idea of the work done, towards the accomplishment of Belgium's deed.

LA BELGIQUE EN GUERRE

Texte par

MAURICE MAETERLINCK

CYRIEL BUYSSE

L. DUMONT-WILDEN

